

**Alex Staiger**

Alex Staiger Productions is based in conceptual art directing; questioning value through humour in her performances, music, videos and sculptural installations. If you like it, you should buy it; it is easier than owning a dog! Alex completed her MFA at Goldsmiths in 2007.

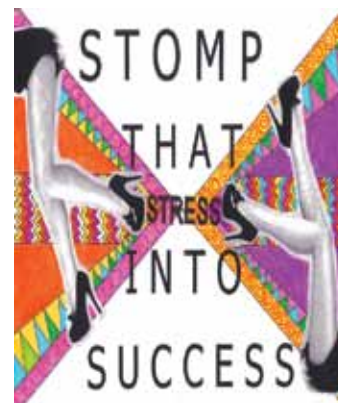
[www.alexstaiger007productions.com](http://www.alexstaiger007productions.com)  
[artistatyourservice.com](http://artistatyourservice.com)



**Amanda Morie**

Amanda Morie is a recent graduate of the University of Alberta in Canada studying Elementary Education and Fine Arts. She is an emerging artist concentrating on abstract art, using acrylics on canvas with various textures. "The heart is like a paint brush when it strokes across a crisp white canvas."

[www.amorie.ca](http://www.amorie.ca)



**Amy Cohen Banker**

Amy Cohen Banker was born in New York in 1960 and has been exhibiting since 1992. Her paintings, installations, multimedia, photography and video projects have been shown worldwide in museums and public and private collections including Hermitage Museum, Whitney Museum of American Art and the Museum of Modern Art, among others.

[www.amycohenbanker.com](http://www.amycohenbanker.com)



**Angela Wakefield**

Angela Wakefield is the leading urban landscape painter of her generation. Early in her career, Angela focused on painting the north of England, however, her recent work based on London & New York promises to be her most dynamic and impressive series to date.

[info@ascotstudios.com](mailto:info@ascotstudios.com)  
[www.ascotstudios.com](http://www.ascotstudios.com)



**Anil CS Rao**

Anil CS Rao is an artist/writer based in Eluru, a small town in South India. These days he primarily illustrates and writes his own original graphic novels. In the past he has exhibited his artwork in galleries in New York, Washington DC and India.

<http://anilcsrao.net>



**Ann Russell**

**Tiny Worlds**

Australian artist, Ann Russell, works with odd spaces caught just outside real existence, creating tiny mystical worlds by means of poetic bricolage. The fantastic assemblage sculptures incorporate found objects, fibre, fabric, glass, Perspex, beads and resin, and draw the viewer in to explore them with Alice-like wonder.

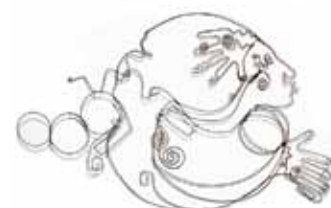
[annrussellart@bigpond.com](mailto:annrussellart@bigpond.com)  
[www.annrussellart.com](http://www.annrussellart.com)



**Arlyn Ende**

American collagist Arlyn Ende untangles and reconstructs abstract ideas, often against interrupted grids. Her designs reveal Zen-like dialogues between colour, composition and existential viewpoint as she coaxes sensuous materials into elegant harmony across altered surfaces. A show of new work opens in October at Tinney Contemporary, Nashville.

<http://sites.google.com/site/arlynende>  
[arlyn.ende@gmail.com](mailto:arlyn.ende@gmail.com)



**Asia Scudder**

Asia Scudder's archetypal images are expressed as wire "drawings". These are three-dimensional sculptural pieces that hang as two-dimensional artworks, revealing surprising shadows and lines. They are whimsical, imaginative and inspiring artworks. She has exhibited widely and received special honour with entry in the Venice Biennale (2001).

[asia333@sbcglobal.net](mailto:asia333@sbcglobal.net)  
[www.runninghorsestudio.net](http://www.runninghorsestudio.net)

**Barbra Cropper**

Barbra Cropper is a leading printmaker in the North of England. She seeks beauty and originality in her recent monoprints and etchings of exotic flowers and winged creatures in the world of nature. Her works are often inspired by poetry. Barbra exhibits nationally.

[mail@bcropper.co.uk](mailto:mail@bcropper.co.uk)

Image: Dragonfly and Orchid.



**Bea Last**

Bea Last is based in S.W. Scotland. She is concerned with the exploration of paint onto large canvas; its application and dynamics. Working drawings are also an essential part of her practice. She has exhibited widely with work held in public, private and corporate sectors.

[b.last@hotmail.co.uk](mailto:b.last@hotmail.co.uk)  
[www.re-title.com/artists/bea-last.asp](http://www.re-title.com/artists/bea-last.asp)  
[www.axisweb.org/artist/bealast](http://www.axisweb.org/artist/bealast)



Image: Quarrels & Lies. Oil on Canvas, 178cm x 178cm.

**Bernat Millet**

Graduated with a First Class BA Honours degree in Photography and was recently selected for *The Taylor Wessing Photographic Portrait Prize 2011*. Based in London, with a background in social documentary photography, Millet's portraits seek the relation between the aesthetic and the subject. By waiting for the perfect combination of light, colours and subject, Millet creates a moment of harmony. [www.bernatmilletphotography.com](http://www.bernatmilletphotography.com)



**Bill John**

Portraits made in pencil by a young Greek artist who, trying to sketch down to shapes the emotions and characteristic elements of the model's personality, develops a distinctive personal style.

[vasilisiwannou@hotmail.com](mailto:vasilisiwannou@hotmail.com)

**Bob Clyatt**

My work explores our oldest collective knowledge and somehow encodes it in sculptural form, relating it to contemporary issues and audiences. In support of this I am drawn to create with ancient materials and art making methods, combined of course with modern technologies, bringing the ancient and contemporary into conversation.

[www.clyattsculpture.com](http://www.clyattsculpture.com)



**Caitlin Karolczak**

Caitlin Karolczak's interaction with paint, pigments and found objects serves as an ongoing personal dialogue between old and new approaches to art. With the use of rich surfaces and technique combined with a morbid concern for life, the grotesque is depicted as resilient, regenerative and beautiful.

[karo0019@umn.edu](mailto:karo0019@umn.edu)  
[www.StudioSilenti.com](http://www.StudioSilenti.com)



**Carol Ginandes**

Boston photographer shown/collected by galleries, museums and various collections. Her large, colour saturated landscapes depict transcendent experiences of nature. Her portraits, both canine and human, are delightfully astute. Limited edition prints from *South American*, *New England* and *Outer Cape Portfolios* are available for viewing, ordering and purchase online. [cginandes@aol.com](mailto:cginandes@aol.com)  
[www.carolginandes.com](http://www.carolginandes.com)



**Catherine S Adamson**

Canadian artist, Catherine Adamson, lives and works in Vancouver, British Columbia. She has a Bachelor of Arts in Visual Arts and English. Influenced by Jackson Pollock, she has developed a "free-flow" method: allowing paint to flow from above and fall onto a flat canvas. Layer upon layer, she builds amazing depth and movement. Painting is her passion and joy, as evidenced in every piece. [www.catherineadamson.com](http://www.catherineadamson.com)

**C E Morse**

C E Morse is a long-time award-winning fine art photographer who studied with Aaron Siskind at Rhode Island School of Design. Known for large abstract images that defy recognition, he finds art in the wild which incites curiosity and fires the imagination. Limited archival editions.

*cmorse1@maine.rr.com*  
*www.cemorsefineartphoto.com*



**Charles Corda**

International Awards include: 2011 Gold Medal – Prix De La Photographie Paris; International Colour Awards; B&W Spider Awards; Pilsner International Photography Awards; Venice International Photography Awards and London Photographic Association. Works exhibited internationally. Miami based seeking European & Asian representation.  
*CRC@rcorda.com*  
*www.photos.rcorda.com*



**Charles Lane**

Charles Lane specialises in fashion/ portraiture and the natural world shot on location or in his studio. Charles likes to add a fine art finish to his work that engages the viewer, provides a sense of place and evokes an emotional response. His landscape work has been exhibited throughout the UK.

*www.charleslane.co.uk*



**Christopher Petrich**

Christopher Petrich is based in the Pacific Northwest. His emphasis begins with human relationships and extends to the grand vistas of the Northwest's rugged terrain. His work resides in corporate and private collections in the United States and Great Britain.

*contact.christopher.petrich@coolphoto.com*  
*www.coolphoto.com*

**Craig Robb**

An American artist whose sculptures are commentaries on the world as he sees it, but who understands that the perception of the viewer is probably more relevant. This body of work reflects the artist's exploration into the relevance of the object as art, where the banal becomes a study in beauty.

*www.craigrobb.com*



**Daniel Martin Diaz**

One of my earliest memories as a child was the way death and religion played an important role in my family's life. My parents were born in Mexico with traditional beliefs which rendered no logical explanation. These unanswered questions find a home in my work, revealing themselves to me.

*dmd@danielmartindiaz.com*  
*www.danielmartindiaz.com*



**Danuta Kowalczyk Frydrych**

Danuta is a master artist whose works are found in private collections around the world. She enjoys working with many media. Her recent works are part of a series, *Elements*, illustrating intricate connections between all elements of the universe. These works are being presented by the Hunter Bisset Gallery in Vancouver.

*dankof@shaw.ca*  
*www.dkfonline.com*



**Details Art Materials Store**

Newcastle Arts Centre  
Fast and Secure online Art & Graphics shopping competitive prices.  
*www.details.co.uk*  
0191 261 5999  
9-5 Monday-Saturday  
Established 1982.

*www.newcastle-arts-centre.co.uk*

**Eric Wiles**

USA-based artist Eric Wiles is an emerging photographer with a passion for still life, scenic landscapes and all natural beauty. His work has been published in *Sunday Travel Times* magazine.

[www.ew-photo.com](http://www.ew-photo.com)  
[www.ew-photo.photoshelter.com](http://www.ew-photo.photoshelter.com)



**Flavian Alaigre**

London-based artist, Flavian Alaigre is a painter of desire. Provocative and savagely poetic, his work explores the human scope of animalism, eroticism and aggressive behaviour.

[www.flavianalaigre.com](http://www.flavianalaigre.com)



**Gary Brashier**  
**Bronze & Steel – Separation & Reclamation**

Concept art nudes that celebrate the human form with the classic sculpture. From the mineral origins to Man's creation, metal and earth textures collide and extract. Gary graduated from Art & Photography in England 1989. Currently exhibiting in Solothurn, Switzerland.

[info@garybrashier.com](mailto:info@garybrashier.com)  
[www.bronzeundstahl.ch](http://www.bronzeundstahl.ch)



**Geoff Oke**

Oke's pieces are sought after for their richness and warm earthiness; they are both brooding and comforting. He develops his complex paintings over time, skilfully layering texture and glazes, evoking emotions and memories of places, lives and times past. His work is shown at Woodbine Contemporary Arts.

[geoffreyoke@live.com](mailto:geoffreyoke@live.com)  
[geoffreyoke.blogspot.com](http://geoffreyoke.blogspot.com)

**Helen Joyce**

Helen Joyce is a British visual artist and painter. Her beautiful semi-abstract figurative paintings echo the abstract that inspire them. Taking the idea of the journey as her starting point, her work speaks about the landscape and her relationship to it.

[helenjoyce3@aol.com](mailto:helenjoyce3@aol.com)  
[www.helenjoyce.co.uk](http://www.helenjoyce.co.uk)



Image: *Cloisters 16*, 80 x 120cms, mixed media on canvas.

**Jacqueline Jones**

Jacqueline Jones was born in Wales. Her work is of a raw, naïve and expressive quality and covers many themes from myth to personal experience. She has exhibited in Wales, London and the USA.

<http://gator1040.hostgator.com/~jacqueli/>



**Janis Sanders**

Whether done en plein air and reaching to interpret the overall mood and spirit of a place, or a more studied studio piece, each painting strives to convey the mood and view of a brief moment in the ever-changing light and atmosphere of the American New England shores.

Gallery representation: JTodd Galleries & Camden Falls Gallery  
[www.janissanders.com](http://www.janissanders.com)



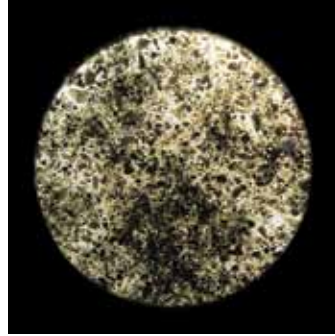
**Jenny Williams**

Jenny Williams has a real empathy with colour. She works in oil paint, mostly figurative, on narrative themes exploring human behaviour and the human form. Jenny lives and works in the Welsh Marches having moved from London. She has exhibited widely and has work in several private collections.

[jenny@jennywilliams.net](mailto:jenny@jennywilliams.net)  
[www.jennywilliams.net](http://www.jennywilliams.net)

**Jo Holland**

Holland's photographs are highly thought-provoking, emotive and open to interpretation. It is the combination of recording onto photographic paper both the transmitted and reflected light passing through and bouncing off her subjects, together with her sharp eye for detail, that gives her work such a transcendental beauty.  
[www.joholland.com](http://www.joholland.com)  
[info@joholland.com](mailto:info@joholland.com)



**Joe Kupillas**

Emerging artist, Joe Kupillas, has exhibited his paintings and collages throughout New York. The creative process allows him to ruminate on a subject in an effort for better understanding. The end result does not necessarily have answers; it's the product of the attempt.

[Joe.kupillas@gmail.com](mailto:Joe.kupillas@gmail.com)  
[www.josephkupillas.com](http://www.josephkupillas.com)



**Joseph Losonczi**

Joseph Losonczi is a Hungarian born artist living and working in the United States where he is a citizen and resident. He commands a refined style and a subtle sense of colour harmony, elevating his country scenes to universal relevance.

[josephlosonczi@earthlink.net](mailto:josephlosonczi@earthlink.net)  
[www.artshow.com/josephlosonczi](http://www.artshow.com/josephlosonczi)



**Joyce Slate**

Joyce Slate is an award-winning jewellery artist currently exhibiting her work across the USA at many fine art festivals. She creates jewellery in fine silver, and incorporates exotic parrot feathers and imprints of ancient artefacts to give many of her pieces a sense of history, fluidity and colour.

[joyceslate@yahoo.com](mailto:joyceslate@yahoo.com)  
[www.mythosjewelry.com](http://www.mythosjewelry.com)

**Juanita Noble**

Juanita is an Edmonton born artist who currently resides in Chilliwack, B.C., Noble received her training at the Emily Carr School of Fine Art in Vancouver. Each original painting is a story being told by the merging of the artist's mind, spirit and soul to produce unique and unusual works of art.

[www.juanitanoble.com](http://www.juanitanoble.com)



**Julia Purinton**

Utilising a familiar vernacular of landscape imagery, Julia Purinton explores psychological passage and growth in paintings which resonate with emotional experience. The viewer is drawn to the image through recognition of the feeling of a place, and rewarded by the sensation of having shared both the mystery and commonality of human experience.

[www.medusastudio.com](http://www.medusastudio.com)



**Justin Wheatley**

[www.justinwheatley.com](http://www.justinwheatley.com)  
[www.justinwheatley.blogspot.com](http://www.justinwheatley.blogspot.com)



**Kara Bjornstad**

Kara Bjornstad is a Canadian artist whose rich abstract images are a lively interplay of colour, motion, depth and light. Bjornstad's current media are ink and acrylic. The vibrant colours and delicate details of her work attract people to her art. Her studio is in Edmonton, Alberta.

[kara@shatteredimage.ca](mailto:kara@shatteredimage.ca)  
[www.shatteredimage.ca](http://www.shatteredimage.ca)

**Kevork Mourad**

The artist's gestural black lines take inspiration from Arabic calligraphy and Armenian manuscripts, two cultures that make up his heritage. Themes of displacement, the plurality of cultures and the environment pervade his work.

Kevork Mourad is a featured artist on [www.distantgallery.com](http://www.distantgallery.com).



**Kye Sook Park**

Park's work expresses the moving world of human life using rapid sketching to capture precious feelings at the moment they occur. Her work has been exhibited internationally and is held in the collection at Clear Hall and New Hall (Murray Edwards College) at Cambridge University. Park is a member of the British Association of Iconographers. [maria07142001@yahoo.co.uk](mailto:maria07142001@yahoo.co.uk)



**Luciana Alvarez**

Off Time Square in a little hotel, we wandered the big city as much as our blisters allowed under the scorching sun. We felt the satisfaction from the adrenaline built by the whimsical life: bustling, theatre, food, art, lights, crowds, tall and old buildings, the Liberty. "Wish came true, my daughter!"

[art@lucianagallery.com](mailto:art@lucianagallery.com)  
[www.lucianagallery.com](http://www.lucianagallery.com)

Image: Wish #1 - Time Square by Luciana Alvarez.



**Marguerite Knight**

An American now resident in England, Marguerite shows her work nationally and internationally, and is included in the permanent collection of the North Dakota Museum of Art. She enjoys crossing the boundaries of disciplines and is currently incorporating her own batiks into the compositions; a tribute to the Fibre Movement. [margueriteknight@talktalk.net](mailto:margueriteknight@talktalk.net)  
[www.guildstudioartists.com](http://www.guildstudioartists.com)

**Melanie Guy**

This visual artist interprets aspects of the environment, especially the ocean; her sculptural language is universal and devoid of cultural reference. In an effort to awaken our sensitivities to changes and vulnerability, reflected light moves across the forms, appearing ethereal and resembling delicate, impermanent qualities like those in nature.

[www.melanieguyart.com](http://www.melanieguyart.com)



**Neil Moore**

Experienced U.K. based figurative painter currently seeking representation and exhibition opportunities.

[www.neilmoore.co.uk](http://www.neilmoore.co.uk)  
[therealneilmoore@hotmail.com](mailto:therealneilmoore@hotmail.com)  
[neilmooreukartist.blogspot.com](mailto:neilmooreukartist.blogspot.com)



'Clasp' 45.5 x 40.5cms. Oil on canvas



**Neil Parker**

With a passion for contemporary and creative photography, Neil Parker provides photographic solutions for a variety of commercial and editorial clients. He also produces beautiful original limited edition prints. A portfolio of his images can be viewed on his website.

[neil.parker01@btinternet.com](mailto:neil.parker01@btinternet.com)  
[www.neilparker.org](http://www.neilparker.org)



**Rhonda Mann**

Rhonda Mann is enthralled by the natural world and human interactions. The way nature affects us, and people affect one another, are endless sources of fascination. She often finds excitement when she uses abstraction to interpret natural phenomena and human emotional interactions.

[metalrho@yahoo.com](mailto:metalrho@yahoo.com)  
[www.rhonda-mann.blogspot.com](http://www.rhonda-mann.blogspot.com)

**Robert K. Pikula**  
**Steel of the Dunes**

Off Lake Michigan on the shoreline of Indiana Dunes, this painting is beautifully designed with a mix of ink and pastel chalk. The size is 43" x 35". Eloquently representing the steel mills is an 1870 locomotive train with a modern plane above.



Chesterton Indiana USA  
[alprkp@msn.com](mailto:alprkp@msn.com)  
[www.alp-art-studio.com](http://www.alp-art-studio.com)

**Saara Kiuru**

Kiuru is a visual artist from Finland who wants to break away from the idea that the artists' work only comes to light after death. She paints trees and landscape, believing them to be a lot like humans, capturing the flow of life and energy that is both beautiful and fragile.



[www.artsara.fi](http://www.artsara.fi)

**Sally McLaren**

Sally McLaren RE has exhibited widely. Her work is held in collections across the world. She is represented by Foss Fine Art at the Affordable Art Fair in Battersea Park from 14- 18 March inclusive, Stand J8. She lives and works in Wiltshire.

[www.sallymclaren.co.uk](http://www.sallymclaren.co.uk)



**Sam Haynes**

London artist Sam Haynes works to commission designing multi-panel artworks for private and public spaces. Working alongside a range of specialist fabricators, her architectural structures capture the rich character of the individual within a dynamic simplicity of form. Clients include Conran Restaurants and Amnesty International.  
[sam@dazzlehouse.co.uk](mailto:sam@dazzlehouse.co.uk)  
[www.sam-haynes.co.uk](http://www.sam-haynes.co.uk)  
[www.dazzlehouse.co.uk](http://www.dazzlehouse.co.uk)



**Shawn McNulty**

Shawn McNulty's vibrant abstract paintings can be found in many private collections throughout the world. His unique process of "scuffling" thick layers of acrylic and pumice results in powerful colour fields over unbridled commotion. McNulty avoids the zone-out of traditional abstract landscapes, offering instead a more battered and complex meditation.  
[info@shawnmcnulty.com](mailto:info@shawnmcnulty.com)  
[www.shawnmcnulty.com](http://www.shawnmcnulty.com)



**Shireen Morris**

Shireen paints from her studio in the rural Cotswold. Her designs are inspired by still life, but by using mixed media, she manages to create contemporary paintings. Her work is always free and never contrived, and has a lively sense of balance, design and colour.

[themorrisclan@aol.com](mailto:themorrisclan@aol.com)



**Simon Burns-Cox**

Simon Burns-Cox is a professional sculptor working in stone and marble and based at The Edinburgh Sculpture Workshop – a new international centre for sculptors. Burns-Cox trained in the UK and Rome and exhibits regularly at the Royal Academies of Edinburgh and Bristol, and in private galleries throughout the UK.  
[sandjbc@me.com](mailto:sandjbc@me.com)  
[www.simonburnscox.co.uk](http://www.simonburnscox.co.uk)



**Simon Gonzales**

Artist Haven Gallery. 1 – 30 April. For gallery location and opening times see [www.artistshavengallery.com](http://www.artistshavengallery.com). Simon's ABKAL art will be part of a forthcoming group show at the gallery. His S'Graffito oil paintings, with their charming rays of light forcing their way through pitch black to reveal twilight colour, must be seen to be appreciated.

[www.abkal.com](http://www.abkal.com)

**Steven Patrick McCowan**

John Kinunan was a shipmate and a Finn. We had a number of adventures on a Merchant ship out of NYC in 1958. We even swept runways in Argentina, Newfoundland.

[www.baxtergalleries.com](http://www.baxtergalleries.com)

*Buddies, JK Leave's Finland to Visit the Queen of Sweden, 2006. 36" x 36", oil on canvas.*



**Sue Averell**

Internationally recognised fine artist Sue Averell specialises in large scale urban landscape paintings. Her works are in many collections in Europe, Asia, Canada and the USA. Averell's canvases of thickly layered paint have to be viewed in person to truly appreciate the textures and richness of colour that bring her subjects to life.

[sue@sueaverell.com](mailto:sue@sueaverell.com)  
[www.sueaverell.com](http://www.sueaverell.com)



**Teresa Gostanza**

The inner thought-provoking passion Teresa inspires within her surrealist visionary art brings an expansion and growth at a subconscious level. There is a depth within each layer of her works that only unfolds when viewed beyond the illusory veil of this reality. Giclées are now available.

[gostanza@yahoo.com](mailto:gostanza@yahoo.com)  
[www.gostanza.com](http://www.gostanza.com)



**Teresa Young**

Teresa Young's style spans across a range of surrealism and abstraction that allows emotions to be powerfully expressed visually. From one genre to the other, these pieces are "emotional landscapes", meant to be interpreted by the viewer in a subjective fashion.

[dalifan.teresa@gmail.com](mailto:dalifan.teresa@gmail.com)  
[www.teresa-young.net/blog](http://www.teresa-young.net/blog)  
[www.teresa-young.net](http://www.teresa-young.net)

**Tom Calnan**

Tom Calnan's paintings function as a considered placement between ideology and desire, and can be seen as a communication between the two, from traditional still-life painting to the more recent languages of twentieth century modernist painting. These philosophical concerns are offset by the individual motives of identity, desire and gender.

[www.tomcalnanart.com](http://www.tomcalnanart.com)



**Tommaso Pedone**

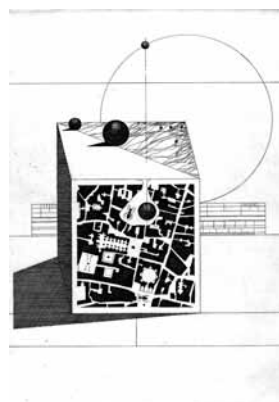
Pedone is a video-artist who graduated from Bologna National Academy of Cinema. Taking inspiration from cinema, photography and contemporary art, Pedone works in video, dance, theatre and documentary, specialising in large scale projections. Pedone also works as a designer for public and private clients. *Lespade* is a series of objects that bridges the gap between sculpture and furniture.

[www.tommasopedone.com](http://www.tommasopedone.com)



**Viky Garden**

Garden's work is gender specific, semi-autobiographical and socio-political in content. She focuses on aspects of human nature and behaviour, creating emotive and psychological dramas. Represented by: The Wetpaint Gallery, UK: [www.wetpaint-gallery.co.uk](http://www.wetpaint-gallery.co.uk); Art Spirit Gallery, USA: [www.theartspiritgallery.com](http://www.theartspiritgallery.com); Warwick Henderson Gallery, New Zealand: [www.warwickhenderson.co.nz](http://www.warwickhenderson.co.nz)  
[www.vikygarden.com](http://www.vikygarden.com)



**William Steinberg**

It is not by coincidence that many etchers were trained as architects. The technique lent itself to both the draughtsman and the visionary to describe and transform the world around them. Today, there are printmakers, such as Steinberg, who choose this manner of presentation of their built environment, whether real or imagined.

[www.williamsteinberg.ca](http://www.williamsteinberg.ca)